

HOW TO APPLY

Dark by Emperor Paint

Before you pick up your brushes, here are a few pieces of advice from our technical team. Always check the weather before starting to ensure the temperature is above 5°C when you are painting and for the full drying time. Also be sure to check that there is no risk of rainfall before the paint has dried and avoid painting in direct sunlight when temperatures are above 25°C as this can impact how paint dries.

ESSENTIAL EQUIPMENT:

Dark by Emperor Paint
Dark Primer
Emperor Exterior Cleaner

Masonry brush
Paint scuttle
Masonry roller

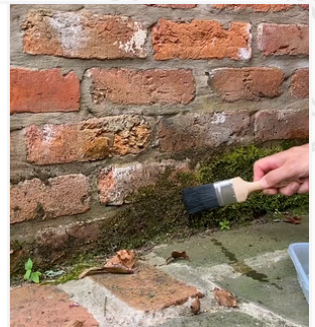
YOU MAY NEED:

Dustsheets
Masking tape
Sandpaper

Good quality exterior filler
Paint scraper
Filling knife

1. Clean

As with any decorating project, the first place to start is with cleaning the surface. This ensures that there is nothing on the surface that will compromise the performance. Start by washing the wall either with a hosepipe or a stiff brush and hot water. Apply Emperor Exterior Cleaner to areas where organic growth such as moss, lichens and mildew have developed. This can be done using a brush, roller or pump-sprayer, depending on what is easiest for you. Allow this to dry for 2-3 hours at 20°C.



2. Repair

The surface you are painting must be sound before you can paint it – this is not only to ensure the surface looks its best but also helps to prevent any water getting into the wall. Ensure any cracks or holes in the wall are filled with a good-quality exterior filler. If there is any peeling paint, remove this using a paint scraper back to a 'firm edge', where no more paint can be removed.



3. Prime

Any bare masonry that isn't painted must be primed before you paint. When using Dark, ensure you use Dark Primer. Simply apply Dark Primer to the bare surface using a brush or roller at a coverage of between 4-6m² per litre, depending on the porosity of the surface. Make sure you allow the primer to dry for 3-5 hours at 20°C, or longer at lower temperatures. If you are using Emperor Textured Basecoat to create a textured finish, you do not need to apply primer as this is self-priming.



4. Paint

Make sure to mix your paint thoroughly before use. We recommend using a combination of a masonry brush and a long-pile roller, but you can also spray Dark. Dark is a two-coat paint which must be applied at 5-6m² per litre on smooth surfaces, which can be reduced down to 2-3m² per litre on rough, textured surfaces. You can dilute your first coat of paint by 5% with water but do not dilute your second coat. Allow 8 hours at 20°C for the first coat to dry before you apply your second coat.



Have a question? You can get in touch with us by emailing info@emperorpaint.co.uk.